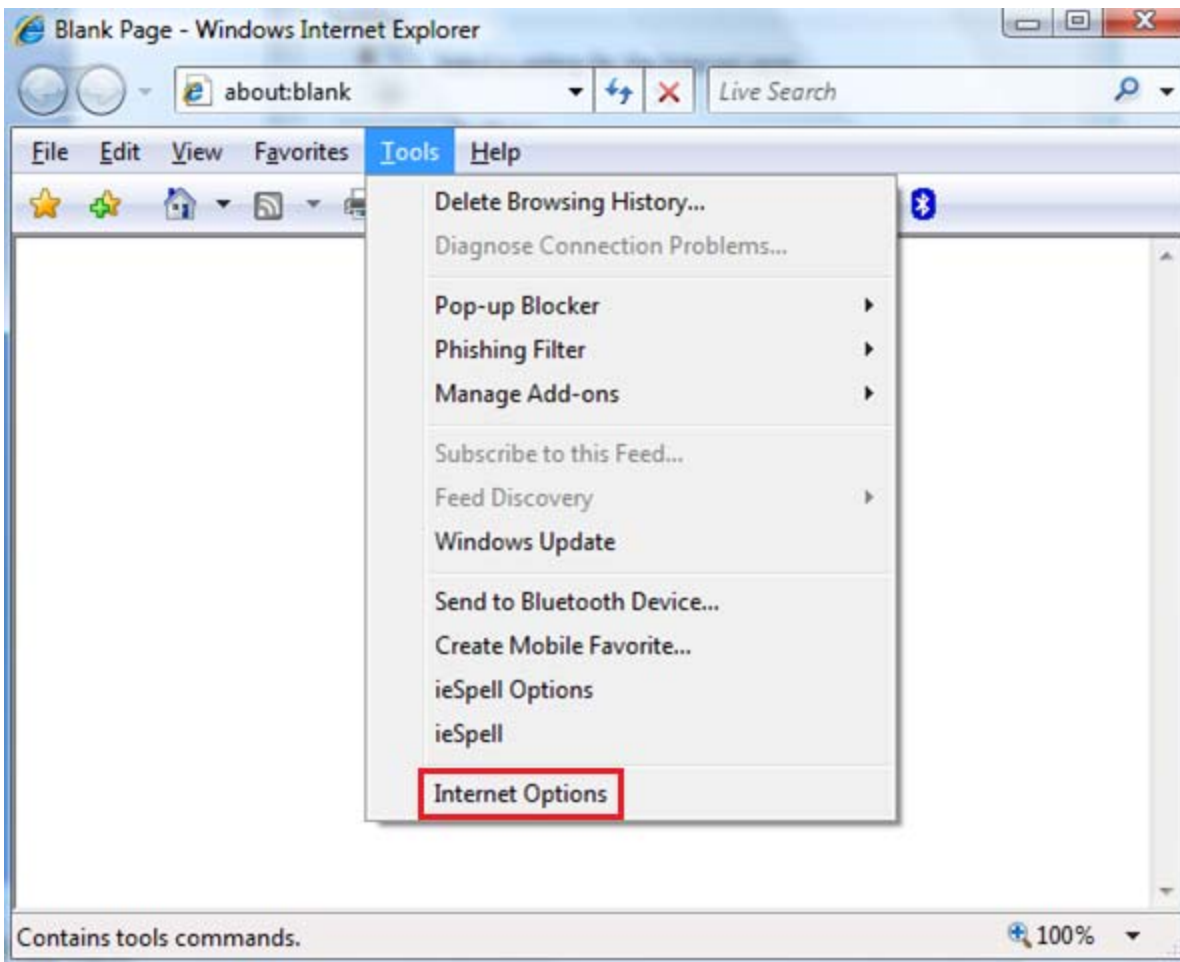


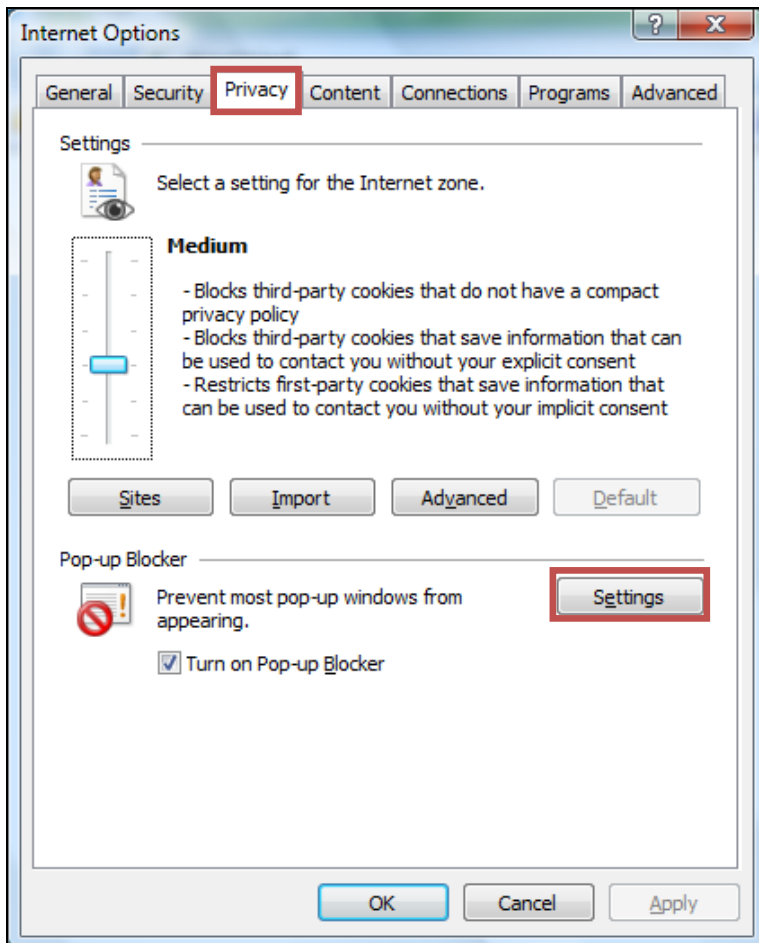
PELICAN occasionally uses pop-up windows that may be blocked by Internet Explorer's pop-up blocker. To access these windows, you must add **state.pa.us** to your Internet browser's exception list. This prevents Internet Explorer from blocking pop-ups from Commonwealth of Pennsylvania websites using a "state.pa.us" address.

Important Note: This tip sheet provides the procedure for adding an exception to Internet Explorer pop-up blocker for Commonwealth of Pennsylvania websites. If you are running other pop-up blockers, you may need to modify them as well.

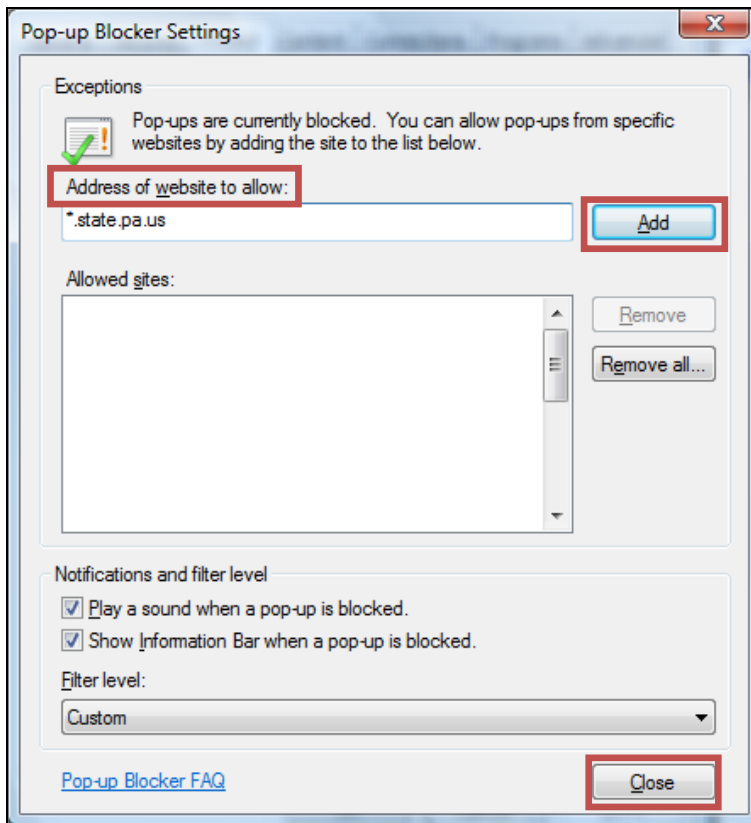
1. Open Internet Explorer.
2. Navigate to Tools > Internet Options.



3. The *Internet Options* box opens. Click the **Privacy** tab.
4. Click [Settings].

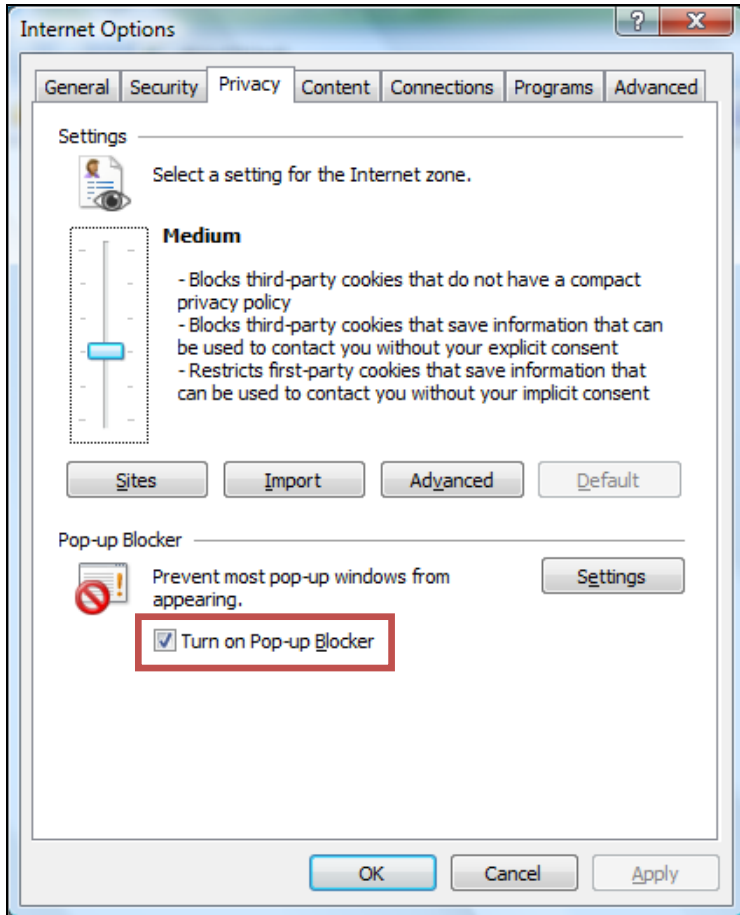


5. The *Pop-up Blocker Settings* box opens.



6. Type ***.state.pa.us** in the **Address of website to allow** field.
(Note: You must include the asterisk)
7. Click [Add].
8. Click [Close].

9. The *Pop-up Blocker Settings* box closes and the *Internet Options* box displays again.
10. Click the checkbox next to “Turn on Pop-up Blocker” to turn on the Pop-up Blocker.



11. Click [OK].